

City of Hoboken CY 2018 Introduced Budget Supplemental Materials

Department of Environmental Services

Prepared by
Leo Pellegrini
Director



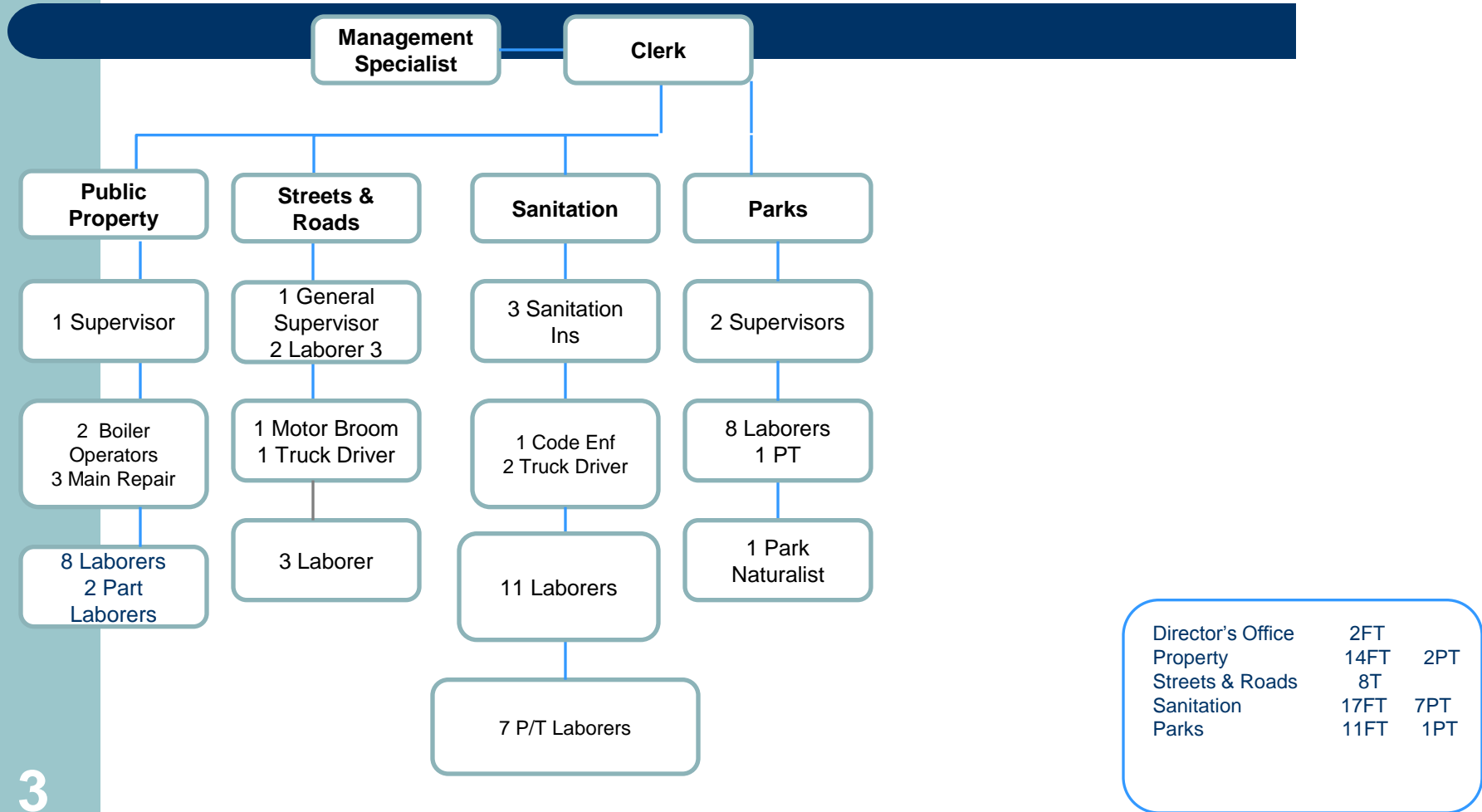
Department of Environmental Services

Responsibilities

- Director's Office – Call and Command Center
- Public Property – Building Maintenance, Boiler/HVAC Etc.
- Street & Roads – Road Repair, Snow Removal, etc.
- Sanitation - Street Sweepers, Street Cleaners, Garbage and Recycling
- Parks - Maintenance & Operations of the following Parks - Castle Point Skate Park, Church Square Park, Sinatra Park, Pier A, Pier C, Maxwell Place Park, Harborside Park, Community Garden, Jackson Park, Jefferson Park, Madison St. Park, Gateway Park, Triangle btwn. Paterson Plank Rd. & Harrison St., Multi-Service Center, Steven's Park, Elysian Park, Sinatra Park Soccer Field, Little League Field, Legion Park, Boat House & Beach Area, Island Gardens on 11th Street, 14th Street, Housing Authority Ball Field, 1600 Park.
- New Parks - BASF "POP" Park, Southwest Park



Department of Environmental Services





Department of Environmental Services

Employees

- Total number of employees (2018): 52 F/T 10 P/T (62)
- Total number of employees (2017): 51 F/T 12 P/T (63)
- Total number of employees (2016): 48 F/T 15 P/T (63)
- Total number of employees (2015): 48 F/T 15 P/T (63)
- Total number of employees (2014): 49 F/T 15 P/T (64)
- Total number of employees (2013): 51 F/T 14 P/T (65)
- Total number of employees (2012): 53 F/T, 17 P/T (60)
- Total number of employees (2011): 58 F/T, 25 P/T (83)
- Total number of employees (2010): 60 F/T, 40 P/T (100)
- Total number of employees (2009): 49 F/T, 38 P/T



Department of Environmental Services

Goals

- Stabilize and improve **Sanitation costs:**
 - Commercial Waste Tipping Fees
 - Tipping Fees
 - Composting
 - Recycling
- Continue to Up Grade Vehicle Fleet w/Safe and Reliable Equipment. (Acquisition)
- Continue to improve Snow Removal operations

CY 2018 Introduced Budget Department of Environmental Services



Department of Environmental Services Budget

	2017 Budget	2017 Paid or Charged	2018 Budget	% Change	Salary & Wages 2018	Other Expenses 2018
Director's Office	\$146,696.00	\$132,593.46	\$125,355.00	-14.54%	\$122,855.00	\$2,500.00
Public Property	\$1,189,471.00	\$1,123,582.58	\$1,174,156.00	-1.28%	\$822,156.00	\$352,000.00
Streets & Roads	\$990,411.00	\$820,645.99	\$761,775.00	-23.08%	\$561,775.00	\$200,000.00
Sanitation	\$5,335,809.00	\$5,113,378.06	\$5,423,583.00	1.64%	\$888,583.00	\$4,535,000.00
Parks	\$726,660.00	\$520,449.62	\$681,588.00	-6.20%	\$540,678.00	\$140,910.00
Shade Tree Commission	<u>\$50,000.00</u>	<u>\$49,696.76</u>	<u>\$50,000.00</u>	0%		<u>\$50,000.00</u>
	\$8,439,047.00	\$7,760,346.47	\$8,216,457.00	-2.6%	\$2,936,047.00	\$5,280,410.00



Department of Environmental Services

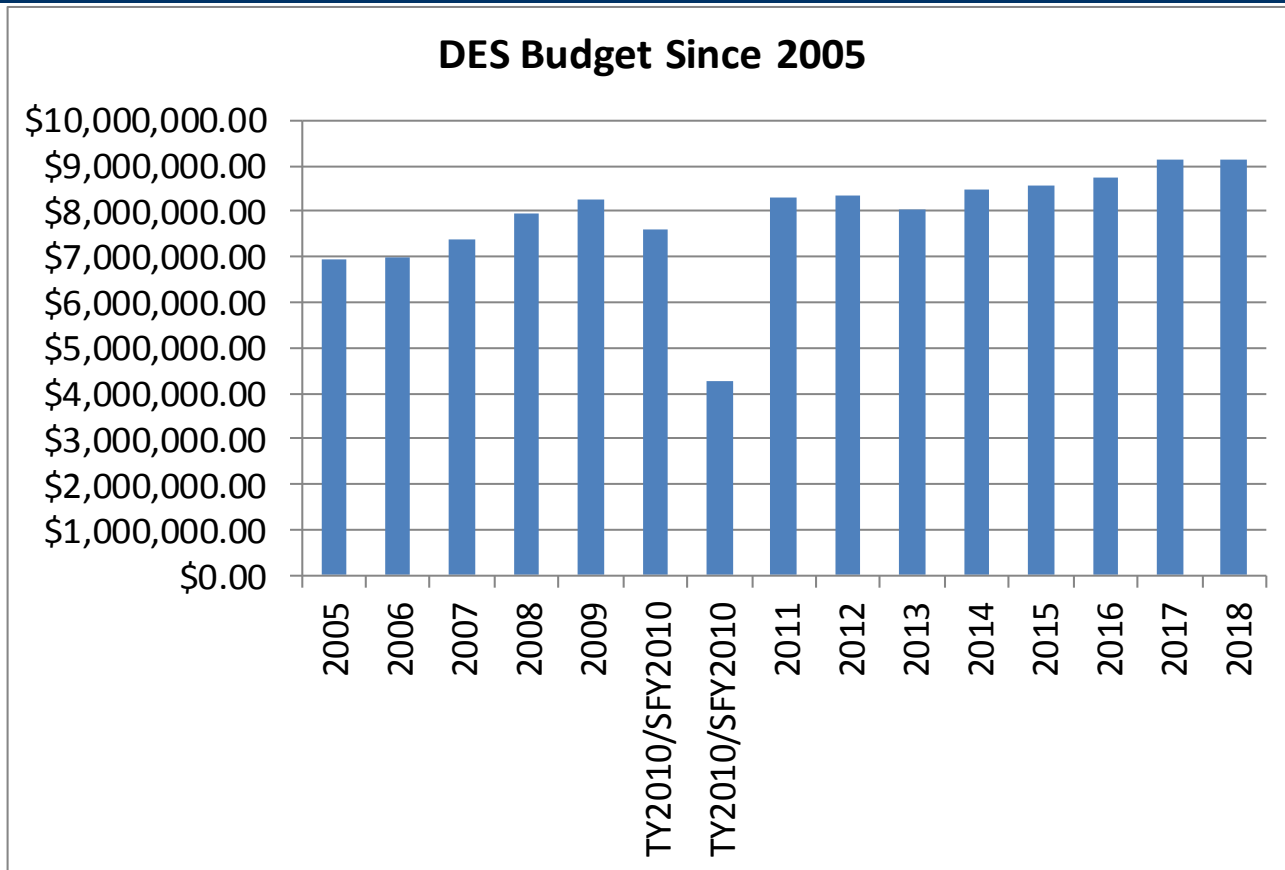
Grant/Trust Accounts Remaining Balance

- Recycling Tonnage Grants - \$109,476.00
- Clean Communities Grants - \$73,470.00
- Green Acres Open Space Fees Trust - \$158,854.18
- Snow Removal Trust – \$196,432.14

CY 2018 Introduced Budget Department of Environmental Services



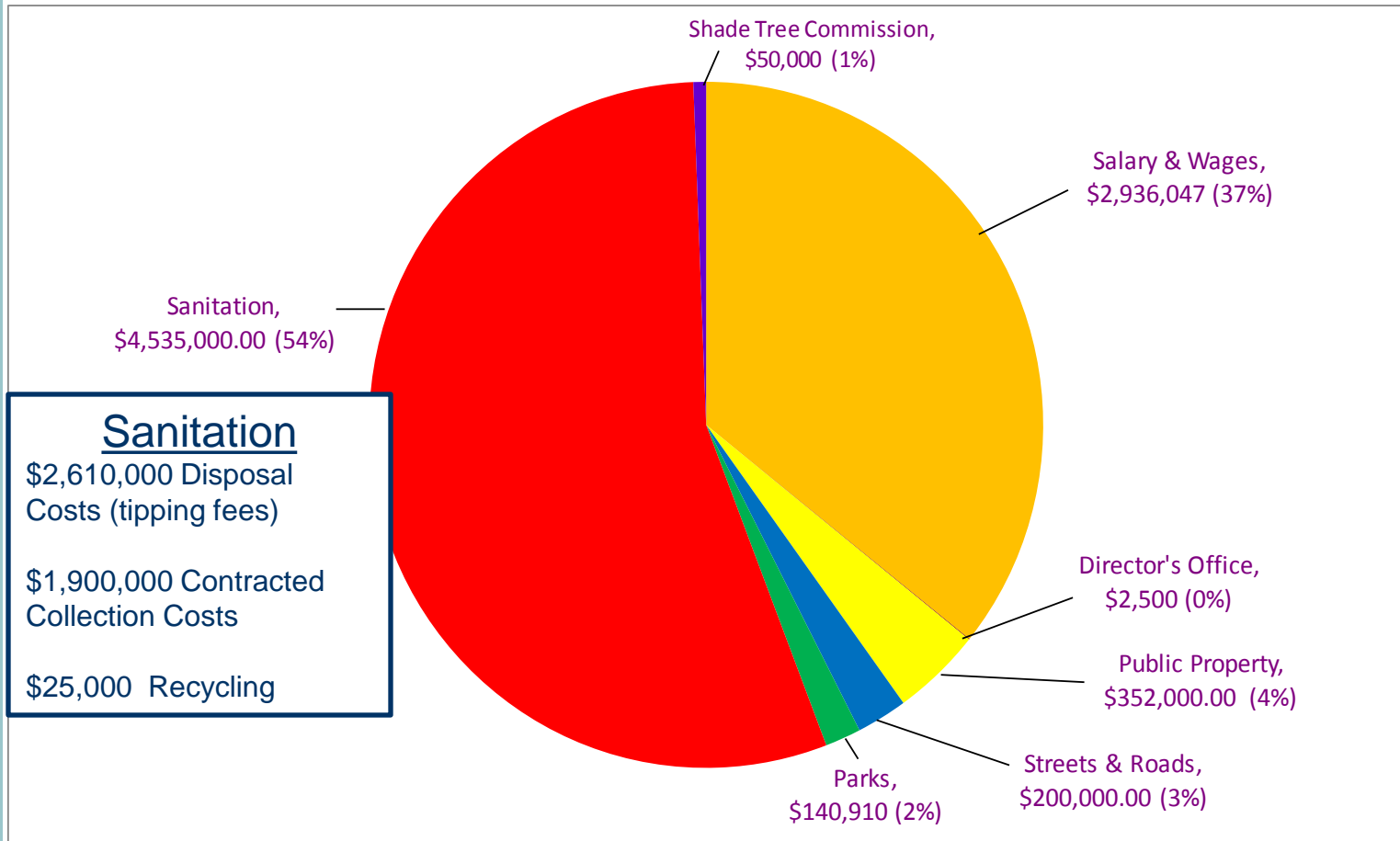
Department of Environmental Services Budget



CY 2018 Introduced Budget Department of Environmental Services



Department of Environmental Services Budget



CY 2018 Introduced Budget Department of Environmental Services



Department of Environmental Services

Curbside Solid Waste

	Garbage (tons)	Single stream (tons)	Recycling rate
2015	24,613.50	6,681.84	21.35%
2016	22,884.71	6,850.97	23.04%
2017	23,294.74	7,084.97	23.32%
Single Stream Recycling Costs 2017		\$112,937.47	
Garbage Costs			
	Per Ton	Total	
2015	\$97.54	\$2,400,800.79	
2016	\$98.51	\$2,254,372.78	
2017	\$99.50	\$2,521,379.75	




Department of Environmental Services Goals (Recycling and Garbage Collection Schedule)


HOBOKEN COLLECTION SCHEDULE						
Sunday	Monday	Tuesday	Wednesday	Thursday	Friday	Saturday
Garbage Household furniture, mattresses, etc.	Recycling Mixed aluminum, glass, plastic, paper	No Collection	Garbage Household furniture, mattresses, etc.	Recycling Mixed aluminum, glass, plastic, paper eWaste Yard Waste Metal furniture & appliances	Garbage Household furniture, mattresses, etc.	No Collection

Recyclables & Garbage are to be placed curbside in a covered container after 7:30 PM (9:00 PM on Washington St.)
NO GARBAGE OR RECYCLING IS TO BE PLACED CURBSIDE TUESDAY OR SATURDAY
Recyclables are **NOT** TO BE PUT IN PLASTIC BAGS.

Questions? Please contact the Dept. of Environmental Services
Telephone: 201-420-2000 ex.4000 **Fax:** 201-239-0630 **E-Mail:** goalamoner@hobokennj.gov



RECYCLING IS THE LAW
www.hobokennj.gov/recycle




MONDAY & THURSDAY EVENING
SINGLE STREAM RECYCLING:
The following recyclable items are to be placed together in Clearly Marked Covered Containers.
NO PLASTIC BAGS.
Aluminum: food and beverage containers, clean foil
Glass: food and beverage container - brown, clear, or green Ferrous (iron) cans
Plastics: with symbols #1, #2, #3, #4, #5, #6, #7: soda and water bottles, milk and water jugs, detergent, shampoo bottles, yogurt and deli containers
Rigid plastics: plastic milk/soya crates, plastic buckets with metal handles, plastic laundry baskets, plastic lawn furniture, plastic totes, plastic drums, plastic coolers, plastic flower pots, plastic drinking cups/glasses, plastic 5-gallon water bottles, plastic pallets, and empty plastic garbage/recycling bins.
Cardboard: Old corrugated cardboard, cereal boxes, Aseptic and gable top cartons such as juice, soy, broth, milk cartons, etc.
Mixed Paper: Newspaper, Magazines, Catalogs, Telephone books, Printed paper, Copier paper, Mail, All other office paper without wax liners

Recycling Drop-Off Center
Where: 256 Observer Highway
When: 9 a.m. to 4 p.m. Monday-Friday
9 am to 12 noon Saturday
What: Paper, cardboard, aluminum, tin, glass, plastic, metal appliances and furniture, e-waste, motor oil, antifeeze, lead acid batteries, and yard waste.

THURSDAY EVENING
SINGLE STREAM RECYCLING
YARD WASTE
Separate leaves, grass, weeds and branches. Place in see-through bags or tie in bundles. Leaves may be put in special paper bags available at the Drop-Off Center.
METAL
Metal Furniture: Metal file cabinets, desks, bed frames, etc.
Metal Appliances: Remove doors from refrigerators, washers, dryers, and stoves. Hot water heaters, air conditioners, small metal appliances are also accepted.
E-WASTE
Place outside on Monday and Thursday
Electronics (such as Computers, televisions, monitors, etc.)

The following items are NOT recyclable:
PLASTIC BAGS OR FILMS (Saran wrap, etc.)
Microwave trays
Mirrors, Windows or auto glass
Light Bulbs
Ceramics
Porcelain
Hangers (wire, wooden, metal or plastic)
Glass cookware/bakeware
Household items such as cooking pots, toasters, etc.

SUNDAY, WEDNESDAY & FRIDAY EVENINGS
GARBAGE
Place in waterproof containers or in tied plastic bags.
Do not put garbage in cardboard boxes.
Household Furniture:
Any non-metal furniture, mattresses, etc.



Ravinder S. Bhalla,
Mayor
City of Hoboken
Leo Pellegrini
Director
Department of Environmental Services

NO: Hazardous waste such as paint, varnish, turpentine, pesticide, etc. For hazardous waste disposal information, call 1-201-324-6222.



Department of Environmental Services Capital Improvements

Madison Street Park Improvements



Pier A Bike Path



Dog Runs





Side Park will be developed from 15th street north to Weehawken
of the Rebuild by Design Hudson River project buildout.
Construction is anticipated to begin in the spring of 2019 and concluding
in the fall of 2022.